

VOTE ON DISPOSAL OPTIONS FOR

Hazardous Household Products



Grade level
4-8

Related subject areas
Environmental Science
Health

Objective
Students view various disposal options for hazardous products and discuss which is best.

Time
15 minutes

Equipment needed
Overhead or other projector.

Materials

- Eleven transparencies
- Disposal Options Chart

Introduction

In discussing a variety of disposal options, students realize that hazardous household products present special disposal challenges.

Preparation

- Print out 11 images and prepare them for projection. For example, if using an overhead projector, make transparencies.
- Familiarize yourself with the issues associated with each disposal option. See information in Disposal Options Chart.

Directions

1. This activity is for the whole class. Use after students know what hazardous products are and understand the difference between storm drains and sewers.
2. Open with this statement: "We all have some hazardous products at home. How should we get rid of them if we don't want to use them any more?"
3. Show each image in the numbered order and have students vote on whether the disposal option is a good idea or a bad idea. One way to "vote" is to have students use thumbs up = good idea and thumbs down = bad idea. Students can use a sideways thumb if they are unsure.
4. Ask for their reasons- "Why did you vote that way?"
5. Share the facts from the Disposal Options Chart.
6. Continue with the next transparency.

Produced by



as part of the **Local Hazardous
Waste Management Program**
in **King County**

DISPOSAL OPTIONS CHART



Correct responses with background information

Transparency

Answer

Background Information

1.



Throw it in the garbage?



Fact: This could harm humans such as haulers and land fill workers who handle garbage. It could also harm pets and wildlife that scavenge in garbage. King County residents: do not put hazardous materials in the garbage.

2.



Pour it down the storm drain?



Fact: Storm drains generally lead straight to the nearest body of water, whether that is a local stream, river, lake, or Puget Sound. Water in storm drains is not treated, so pouring a hazardous product in a storm drain is like pouring it directly into a stream.

**Have students vote and share their responses.
Show these transparencies and discuss.**

3.



Local streams and rivers

4.



Puget Sound

DISPOSAL OPTIONS CHART *continued*

Transparency

Answer

Background Information

5.



Pour it on the ground?



Fact: Hazardous products can be washed by rain over the ground to storm drains and ditches that lead to local water bodies. Products can also soak into the ground and pollute underground water –aquifers. Some King County residents drink well water from aquifers.

6.



Send it down the drain or toilet?



Fact: Wastewater from most homes goes to a wastewater treatment plant. Treatment plants are well equipped to handle human waste. But they have a harder time removing toxic products from water. Some of the toxic products may end up in Puget Sound.

Wastewater from some homes goes to a septic tank. Septic tanks are not designed to remove hazardous household products from water. Some of the hazardous products may end up polluting groundwater.

**Have students vote and share their responses.
Show these transparencies and discuss.**

7.



Inside a sewer pipe

8.



Wastewater treatment plant

DISPOSAL OPTIONS CHART *continued*

Transparency

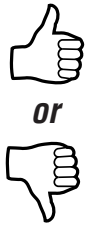
Answer

Background Information

9.



Give it to a neighbor?



Fact: This option is probably better than the first four options if the neighbor uses it up properly. Thumbs up.

On the other hand, using hazardous products may negatively affect human and environmental health. Thumbs down.

10.



Take it to a hazardous waste collection site?



Seattle/King County will dispose of hazardous household waste properly at no extra charge to a householder. There are permanent disposal sites in the cities of Seattle and Factoria. For the rest of the county, there are yearly visits by the Wastemobile.

Call 206-296-4692 or visit <http://www.govlink.org/hazwaste/house/disposal/> to find out hours and locations for both the permanent and mobile sites.

**Have students vote and share their responses.
Show this transparency and discuss.**

11.



Several days of hazardous waste at the Wastemobile

Alternative formats available.
Call 206-263-3050 or 711 (TTY).

Vote on disposal options for hazardous household products!



Throw it in the garbage?

Produced by



King County

as part of the **Local Hazardous
Waste Management Program
in King County**

1.

0507hhwDISPOSAL.indd wgab

Vote on disposal options for hazardous household products!



Pour it down the storm drain?

Produced by



King County

as part of the **Local Hazardous
Waste Management Program
in King County**

Vote on disposal options for hazardous household products!



Local streams and rivers

Produced by



King County

as part of the **Local Hazardous
Waste Management Program
in King County**

Vote on disposal options for hazardous household products!



Puget Sound

Produced by



King County

as part of the **Local Hazardous
Waste Management Program
in King County**

Vote on disposal options for hazardous household products!



Pour it on the ground?

Produced by



King County

as part of the **Local Hazardous
Waste Management Program
in King County**

Vote on disposal options for hazardous household products!



Send it down the drain or toilet?

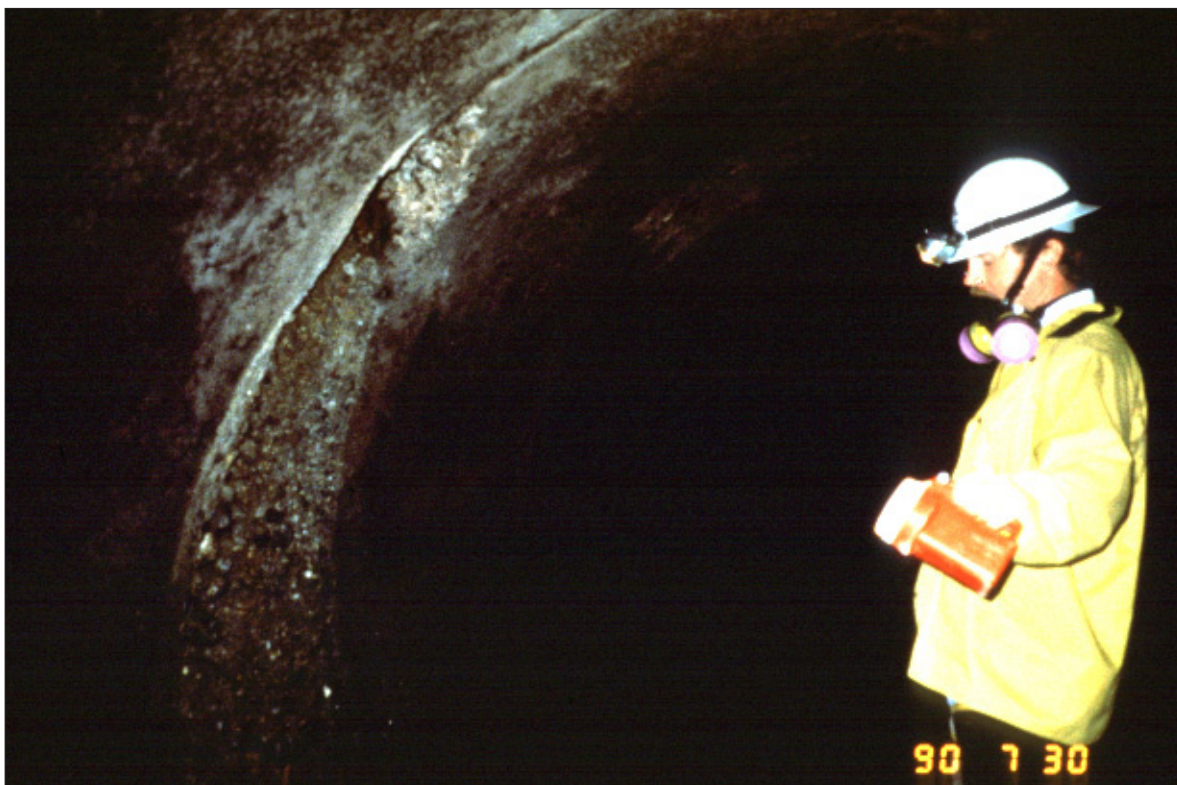
Produced by



King County

as part of the **Local Hazardous
Waste Management Program
in King County**

Vote on disposal options for hazardous household products!



Inside a sewer pipe

Produced by



King County

as part of the **Local Hazardous
Waste Management Program
in King County**

Vote on disposal options for hazardous household products!



Wastewater treatment plant

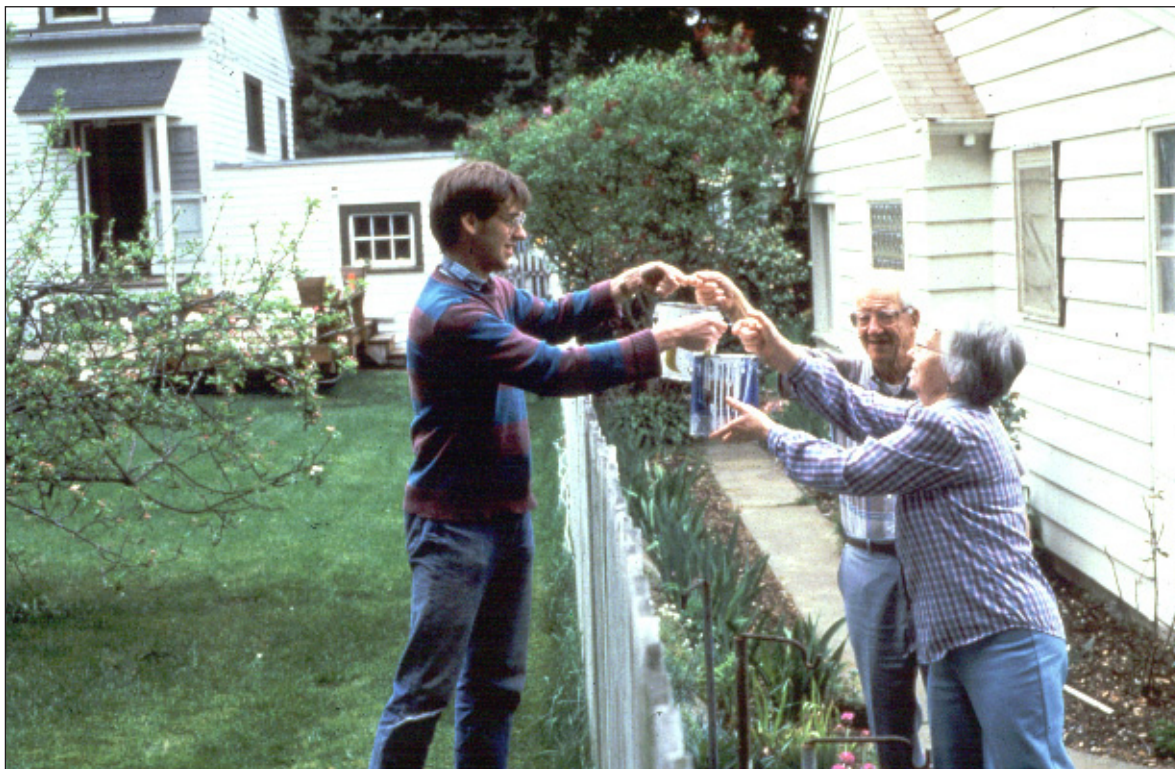
Produced by



King County

as part of the **Local Hazardous
Waste Management Program
in King County**

Vote on disposal options for hazardous household products!



Give it to a neighbor?

Produced by



King County

as part of the **Local Hazardous
Waste Management Program
in King County**

Vote on disposal options for hazardous household products!



***Take it to a hazardous waste
collection site?***

Produced by



King County

as part of the **Local Hazardous
Waste Management Program
in King County**

Vote on disposal options for hazardous household products!



***Several days of hazardous
waste at the Wastemobile***

Produced by



King County

as part of the **Local Hazardous
Waste Management Program
in King County**